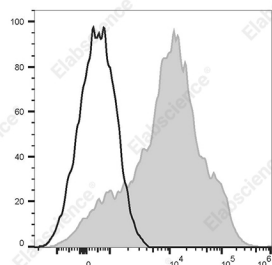

| | |
|---------------------------------|---|
| Product name: | PE/Cyanine5.5 Anti-Human CD38 Antibody[HIT2] |
| Cat number: | MAB1058I |
| Conjugate: | PE/Cyanine5.5 |
| Conjugation Information: | PE/Cyanine5.5 is designed to be excited by the Blue (488 nm), Green (532 nm) and yellow-green (561 nm) lasers and detected using an optical filter centered near 690 nm (e.g., a 690/50 nm bandpass filter). |
| Size: | 100 tests |
| Clone: | HIT2 |
| Host: | Mouse |
| Isotype: | Mouse IgG1, κ |
| Reactivity: | Human |
| Applications: | FCM Each lot of this antibody is quality control tested by flow cytometric analysis. The amount of the reagent is suggested to be used 5 μ L of antibody per test (million cells in 100 μ L staining volume or per 100 μ L of whole blood). Please check your vial before the experiment. Since applications vary, the appropriate dilutions must be determined for individual use. |
| Molecular Weight: | 45 kD |
| Form: | Liquid |
| Buffer: | Phosphate buffered solution, pH 7.2, containing 0.09% stabilizer. |
| Storage: | Keep as concentrated solution. This product can be stored at 2-8°C for 24 months. Please protected from prolonged exposure to light and do not freeze. |
| Synonyms: | 2'-phospho-ADP-ribosyl cyclase;2'-phospho-cyclic-ADP-ribose transferase;ADP-ribosyl cyclase 1;ADP-ribosyl cyclase/cyclic ADP-ribose hydrolase 1;ADPRC 1;CD38;Cyclic ADP-ribose hydrolase 1;T10;cADPr hydrolase 1 |
| Source: | Mouse |
| Background: | CD38 is a 45 kD type II transmembrane glycoprotein also known as T10. It is an ADP-ribosyl hydrolase expressed at variable levels on hematopoietic cells and in some non-hematopoietic tissues (such as brain, muscles, and kidney). In humans, it is expressed at high levels on plasma cells and activated T and B cells. By functioning as both a cyclase and a hydrolase, CD38 mediates lymphocyte activation, adhesion, and the metabolism of cADPR and NAADP. CD31 is the ligand of CD38. |

For Research Use Only

IMMUNOLOGICAL SCIENCES



Human peripheral blood lymphocytes are stained with PE/Cyanine5.5 Anti-Human CD38 Antibody[HIT2] (filled gray histogram) or PE/Cyanine5.5 Mouse IgG1, κ Isotype Control (empty black histogram).

**For Research Use Only
IMMUNOLOGICAL SCIENCES**

Web-site: <https://immunologicalsciences.com> - E-mail: info@immunologicalsciences.com