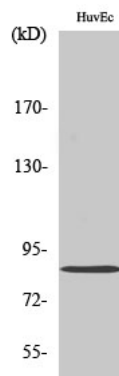


Product name:	Mitofusin 2 Rabbit Polyclonal Antibody
Cat number:	ABN03377
Conjugate:	Unconjugated
Size:	100 ug
Concentration:	1mg/ml
Host:	Rabbit
Isotype:	IgG
Immunogen:	The antiserum was produced against synthesized peptide derived from human Mfn2. AA range:354-403
Reactivity:	Human,Mouse,Rat
Applications:	WB 1:000-1:2500,IHC 1:50-1:100,ELISA 1:5000-1:20000
Molecular Weight:	Observed MW: 86 kDa
Purification:	Affinity Chromatography
Form:	Liquid
Buffer:	Rabbit IgG in phosphate buffered saline , pH 7.4, 150mM NaCl, 0.02% New type preservative N and 50% glycerol. Store at +4°C short term. Store at -20°C long term. Avoid freeze / thaw cycle.
Storage:	Aliquot and store at -20°C (valid for 12 months). Avoid freeze/thaw cycles.
Synonyms:	MFN2,CPRP1, KIAA0214,Mitofusin-2,Transmembrane GTPase MFN2
Source:	Rabbit
Background:	Plays an important role in the regulation of vascular smooth muscle cell proliferation. Involved in the clearance of damaged mitochondria via selective autophagy (mitophagy). Is required for PARK2 recruitment to dysfunctional mitochondria.

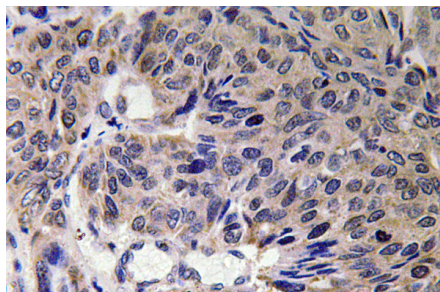
For Research Use Only

IMMUNOLOGICAL SCIENCES

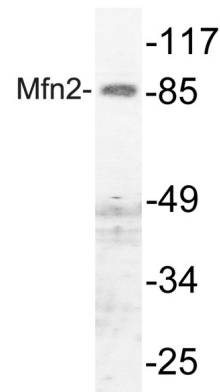
Web-site: <https://immunologicalsciences.com> - E-mail: info@immunologicalsciences.com



Western blot analysis of Mitofusin 2 in various lysates using Mitofusin 2 antibody.



Immunohistochemistry analysis of paraffin-embedded Human lung carcinoma tissue using Mitofusin 2 antibody. High-pressure and temperature Sodium Citrate pH 6.0 was used for antigen retrieval.



Western blot analysis of Mitofusin 2 in HUVEC lysates using Mfn2 antibody.