



Product name:	NRF-1 Rabbit Polyclonal Antibody
Cat number:	ABN14891
Conjugate:	Unconjugated
Size:	100 ug
Concentration:	1mg/ml
Host:	Rabbit
Isotype:	IgG
Immunogen:	The antiserum was produced against synthesized peptide derived from human NRF1. AA range:221-270
Reactivity:	Human,Mouse,Rat,Bovine
Applications:	WB 1:500-1:2000,ELISA 1:5000-1:10000
Molecular Weight:	54kDa
Purification:	Affinity purification
Form:	Liquid
Buffer:	Liquid in PBS containing 50% glycerol, 0.5% protective protein and 0.02% New type preservative N.
Storage:	Aliquot and store at -20°C (valid for 12 months). Avoid freeze/thaw cycles.
Synonyms:	Nuclear respiratory factor 1; NRF-1; Alpha palindromic-binding protein; Alpha-pal
Source:	Rabbit
Background:	<p>This gene encodes a protein that homodimerizes and functions as a transcription factor which activates the expression of some key metabolic genes regulating cellular growth and nuclear genes required for respiration, heme biosynthesis, and mitochondrial DNA transcription and replication. The protein has also been associated with the regulation of neurite outgrowth. Alternative splicing results in multiple transcript variants. Confusion has occurred in bibliographic databases due to the shared symbol of NRF1 for this gene and for "nuclear factor (erythroid-derived 2)-like 1" which has an official symbol of NFE2L1. [provided by RefSeq, May 2014],function:Transcription factor that activates the expression of the EIF2S1 (EIF2-alpha) gene. Links the transcriptional modulation of key metabolic genes to cellular growth and development. Implicated in the control of nuclear genes required for respiration, heme biosynthesis, and mitochondrial DNA transcription and replication.,PTM:Phosphorylation enhances DNA binding.,similarity:Belongs to the NRF1/Ewg family.,subunit:Homodimer. Binds DNA as a dimer. Interacts with PPRC1.,tissue specificity:Ubiquitously expressed with strongest expression in skeletal muscle.</p>

For Research Use Only

IMMUNOLOGICAL SCIENCES

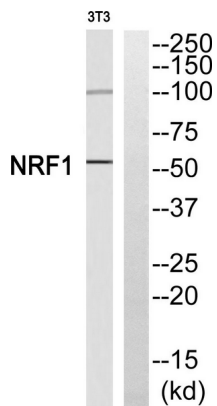


Product Data Sheet
NRF-1 Rabbit Polyclonal Antibody

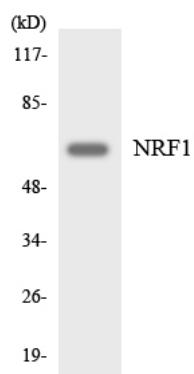
For Research Use Only

IMMUNOLOGICAL SCIENCES

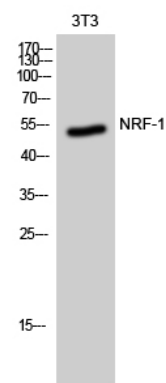
Web-site: <https://immunologicalsciences.com> - E-mail: info@immunologicalsciences.com



Western blot analysis of NRF1 Antibody. The lane on the right is blocked with the NRF1 peptide.



Western blot analysis of the lysates from HeLa cells using NRF1 antibody.



Western Blot analysis of 3T3 cells using NRF-1 Polyclonal Antibody.

For Research Use Only

IMMUNOLOGICAL SCIENCES

Web-site: <https://immunologicalsciences.com> - E-mail: info@immunologicalsciences.com