

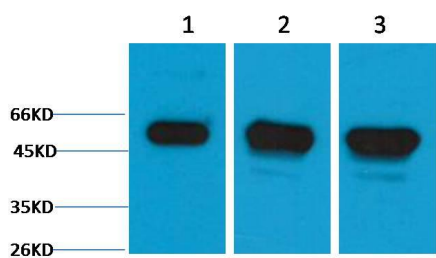


<b>Product name:</b>	β III Tubulin Rabbit pAb
<b>Cat number:</b>	ABE049
<b>Conjugate:</b>	Unconjugated
<b>Size:</b>	100 ug
<b>Concentration:</b>	1mg/ml
<b>Host:</b>	Rabbit
<b>Isotype:</b>	IgG
<b>Immunogen:</b>	Synthetic Peptide
<b>Reactivity:</b>	Human,Rat,Mouse
<b>Applications:</b>	WB,IHC Western Blot: 1/2000-5000 Immunohistochemistry: 1/200-500
<b>Molecular Weight:</b>	50kDa
<b>Form:</b>	Liquid
<b>Buffer:</b>	PBS with 0.02% sodium azide and 50% glycerol pH 7.4
<b>Storage:</b>	Store at -20°C. Avoid repeated freeze-thaw cycles.
<b>Synonyms:</b>	beta3 tubulin antibody, CDCBM antibody, TUBB3 antibody, Tubulin beta III antibody
<b>Source:</b>	Rabbit
<b>Background:</b>	Tubulin is the major constituent of microtubules. It exists as a heterodimer consisting of an alpha and a beta subunit. TUBB3 plays a critical role in proper axon guidance and maintenance.

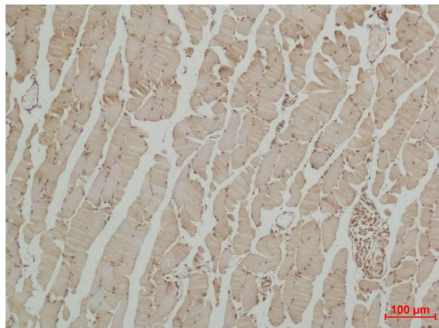
**For Research Use Only**

**IMMUNOLOGICAL SCIENCES**

Web-site: <https://immunologicalsciences.com> - E-mail: [info@immunologicalsciences.com](mailto:info@immunologicalsciences.com)



Western blot analysis of 1) HeLa,  
2) Mouse Brain, 3) Rat Brain tissue with  
ABE049 diluted at 1:5,000.



Immunohistochemical analysis of  
paraffin-embedded Mouse Skeletal  
Muscle Tissue using β III Tubulin. Rabbit  
pAb diluted at 1:500.

**For Research Use Only**

**IMMUNOLOGICAL SCIENCES**