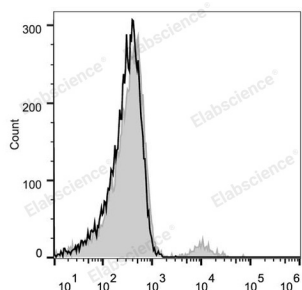




Product name:	PE Anti-Human CD20 Antibody[BCA/B20]
Cat number:	MAB1045D
Conjugate:	PE
Conjugation Information:	PE is designed to be excited by the Blue (488 nm), Green (532 nm) and Yellow-Green (561 nm) lasers and detected using an optical filter centered near 575 nm (e.g., a 585/42 nm bandpass filter).
Size:	100 tests
Clone:	BCA/B20
Concentration:	1mg/ml
Host:	Mouse
Isotype:	Mouse IgG2a, κ
Reactivity:	Human
Applications:	FCM Each lot of this antibody is quality control tested by flow cytometric analysis. The amount of the reagent is suggested to be used 5 μ L of antibody per test (million cells in 100 μ L staining volume or per 100 μ L of whole blood). Please check your vial before the experiment. Since applications vary, the appropriate dilutions must be determined for individual use.
Molecular Weight:	33-37 kD
Form:	Liquid
Buffer:	Phosphate buffered solution, pH 7.2, containing 0.09% stabilizer.
Storage:	Keep as concentrated solution. This product can be stored at 2-8°C for 24 months. Please protected from prolonged exposure to light and do not freeze.
Synonyms:	B-lymphocyte antigen CD20;B-lymphocyte surface antigen B1;Bp35;CD20;Leukocyte surface antigen Leu-16;MS4A1;Membrane-spanning 4-domains subfamily A member 1
Source:	Mouse
Background:	CD20 is a 33-37 kD, four transmembrane spanning protein, also known as B1 and Bp35. CD20 is expressed on pre-B-cells, resting and activated B cells (not plasma cells), some follicular dendritic cells, and at low levels on a T cell subset. CD20 is heavily phosphorylated on activated B cells and malignant B cells. Homo-oligomeric complexes of CD20 are thought to form Ca ²⁺ conductive ion channels in the plasma membrane of B cells. The CD20 molecule is involved in B-cell activation and is associated with various Src family kinases (Lyn, Lck, Fyn). It exists in a complex with MHC class I and II, CD53, CD81, and CD82.

For Research Use Only

IMMUNOLOGICAL SCIENCES



Human peripheral blood lymphocytes are stained with PE Anti-Human CD20 Antibody (filled gray histogram). Unstained lymphocytes (empty black histogram) are used as control.

For Research Use Only
IMMUNOLOGICAL SCIENCES