

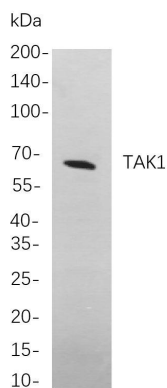


<b>Product name:</b>	TAK1 Rabbit Monoclonal Antibody
<b>Cat number:</b>	MABN21459
<b>Conjugate:</b>	Unconjugated
<b>Size:</b>	100 ug
<b>Concentration:</b>	1 mg/ml. The concentration of this product may be batch-dependent.
<b>Host:</b>	Rabbit
<b>Isotype:</b>	IgG,Kappa
<b>Immunogen:</b>	A synthetic peptide corresponding to target protein.
<b>Reactivity:</b>	Human,Mouse,Rat
<b>Applications:</b>	Western Blot 1:1000-1:5000 Immunocytochemistry/Immunofluorescence: 1:200-1:1000 Immunoprecipitation:1:50-1:200 ELISA 1:5000-1:20000
<b>Molecular Weight:</b>	Observed MW: 67kD
<b>Purification:</b>	Protein A
<b>Form:</b>	Liquid
<b>Buffer:</b>	PBS, 50% glycerol, 0.05% Proclin 300, 0.05% protective protein
<b>Storage:</b>	Aliquot and store at -20°C (valid for 12 months). Avoid freeze/thaw cycles.
<b>Synonyms:</b>	MAP3K7; TAK1; Mitogen-activated protein kinase kinase kinase 7; Transforming growth factor-beta-activated kinase 1; TGF-beta-activated kinase 1
<b>Source:</b>	Rabbit
<b>Background:</b>	Cell localization: Cytoplasm, Membrane. The protein encoded by this gene is a member of the serine/threonine protein kinase family. This kinase mediates the signaling transduction induced by TGF beta and morphogenetic protein (BMP), and controls a variety of cell functions including transcription regulation and apoptosis. In response to IL-1, this protein forms a kinase complex including TRAF6, MAP3K7P1/TAB1 and MAP3K7P2/TAB2; this complex is required for the activation of nuclear factor kappa B. This kinase can also activate MAPK8/JNK, MAP2K4/MKK4, and thus plays a role in the cell response to environmental stresses. Four alternatively spliced transcript variants encoding distinct isoforms have been reported.

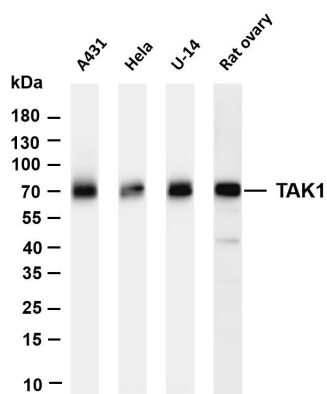
**For Research Use Only**

**IMMUNOLOGICAL SCIENCES**

Web-site: <https://immunologicalsciences.com> - E-mail: [info@immunologicalsciences.com](mailto:info@immunologicalsciences.com)



Western blot analysis of lysates from A431 cells, using TAK1 Rabbit mAb. The HRP-conjugated Goat anti-Rabbit IgG antibody was used to detect the antibody.



Various whole cell lysates were separated by 4-20% SDS-PAGE, and the membrane was blotted with anti-TAK1 antibody. The HRP-conjugated Goat anti-Rabbit IgG (H+L) antibody was used to detect the antibody.

**For Research Use Only**

**IMMUNOLOGICAL SCIENCES**