



<b>Product name:</b>	HRP-conjugated GAPDH Rabbit mAb
<b>Cat number:</b>	MAB4500-HRP
<b>Conjugate:</b>	HRP
<b>Size:</b>	100 ug
<b>Clone:</b>	14C10
<b>Concentration:</b>	1mg/ml
<b>Host:</b>	Rabbit
<b>Isotype:</b>	IgG
<b>Immunogen:</b>	Recombinant protein (or fragment). This information is considered to be commercially sensitive.
<b>Reactivity:</b>	Human, Mouse, Rat
<b>Applications:</b>	WB 1:50000-1:200000 ELISA Recommended starting concentration is 1 µg/mL. Please optimize the concentration based on your specific assay requirements.
<b>Molecular Weight:</b>	36 kDa
<b>Purification:</b>	Affinity purification
<b>Form:</b>	Liquid
<b>Buffer:</b>	PBS containing 50% glycerol and 0.2% BSA, preserved with proclin300 or sodium azide (as specified on the Certificate of Analysis), pH 7.3.
<b>Storage:</b>	Store at -20°C. Avoid freeze.
<b>Synonyms:</b>	G3PD; GAPD; HEL-S-162eP; GAPDH
<b>Source:</b>	Rabbit
<b>Background:</b>	This gene encodes a member of the glyceraldehyde-3-phosphate dehydrogenase protein family. The encoded protein has been identified as a moonlighting protein based on its ability to perform mechanistically distinct functions. The product of this gene catalyzes an important energy-yielding step in carbohydrate metabolism, the reversible oxidative phosphorylation of glyceraldehyde-3-phosphate in the presence of inorganic phosphate and nicotinamide adenine dinucleotide (NAD). The encoded protein has additionally been identified to have uracil DNA glycosylase activity in the nucleus. Also, this protein contains a peptide that has antimicrobial activity against <i>E. coli</i> , <i>P. aeruginosa</i> , and <i>C. albicans</i> . Studies of a similar protein in mouse have assigned a variety of additional functions including nitrosylation of nuclear proteins, the regulation of mRNA stability, and acting as a transferrin receptor on the cell surface of macrophage. Many pseudogenes similar to this locus are present in the human genome. Alternative splicing results in multiple transcript variants.

**For Research Use Only**

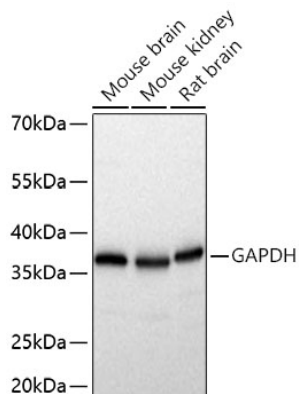
**IMMUNOLOGICAL SCIENCES**



**For Research Use Only**

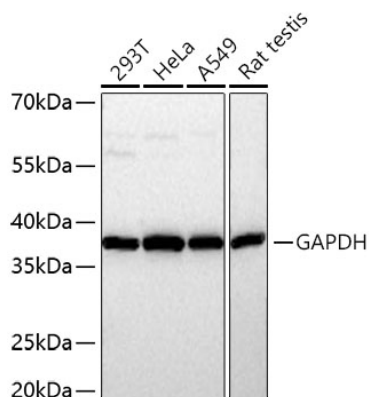
**IMMUNOLOGICAL SCIENCES**

Web-site: <https://immunologicalsciences.com> - E-mail: [info@immunologicalsciences.com](mailto:info@immunologicalsciences.com)



Western blot analysis of various lysates using HRP-conjugated GAPDH Rabbit mAb at 1:170000 dilution incubated overnight at 4°C. Secondary antibody: HRP-conjugated Goat anti-Rabbit IgG (H+L) at 1:10000 dilution.

Lysates/proteins: 25 µg per lane.  
 Blocking buffer: 3% nonfat dry milk in TBST. Detection: ECL West Pico Plus.  
 Exposure time: 5 s.



Western blot analysis of various lysates using HRP-conjugated GAPDH Rabbit mAb at 1:170000 dilution incubated overnight at 4°C. Secondary antibody: HRP-conjugated Goat anti-Rabbit IgG (H+L) at 1:10000 dilution.

Lysates/proteins: 25 µg per lane.  
 Blocking buffer: 3% nonfat dry milk in TBST. Detection: ECL West Pico Plus.  
 Exposure time: 10 s.

**For Research Use Only**

**IMMUNOLOGICAL SCIENCES**