

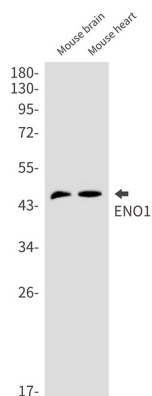


Product name:	ENO1 Rabbit Monoclonal Antibody
Cat number:	MABN01578
Conjugate:	Unconjugated
Size:	100 ug
Concentration:	1mg/ml
Host:	Rabbit
Isotype:	IgG
Immunogen:	A synthetic peptide of human ENO1
Reactivity:	Human,Mouse,Rat
Applications:	WB 1:500-1:1000,IHC 1:50-1:100,ICC/IF 1:50-1:200,FC: 1:50-1:100, IP 1:20-1:50
Molecular Weight:	Observed MW: 47 kDa
Purification:	Affinity Purification
Form:	Liquid
Buffer:	50mM Tris-Glycine(pH 7.4), 0.15M NaCl, 40% Glycerol, 0.01% Sodium azide and 0.05% protective protein
Storage:	Aliquot and store at -20°C (valid for 12 months). Avoid freeze/thaw cycles.
Synonyms:	NNE; PPH; MPB1; ENO1L1; HEL-S-17
Source:	Rabbit
Background:	Multifunctional enzyme that, as well as its role in glycolysis, plays a part in various processes such as growth control, hypoxia tolerance and allergic responses. May also function in the intravascular and pericellular fibrinolytic system due to its ability to serve as a receptor and activator of plasminogen on the cell surface of several cell-types such as leukocytes and neurons. Stimulates immunoglobulin production. MBP1 binds to the myc promoter and acts as a transcriptional repressor. May be a tumor suppressor. Used as a diagnostic marker for many tumors and, in the heterodimeric form, alpha/gamma, as a marker for hypoxic brain injury after cardiac arrest. Also marker for endometriosis. Antibodies against alpha-enolase are present in sera from patients with cancer-associated retinopathy syndrome (CAR), a progressive blinding disease which occurs in the presence of systemic tumor growth, primarily small-cell carcinoma of the lung and other malignancies. Is identified as an autoantigen in Hashimoto encephalopathy (HE) a rare autoimmune disease associated with Hashimoto thyroiditis (HT). HT is a disorder in which destructive processes overcome the potential capacity of thyroid replacement leading to hypothyroidism.

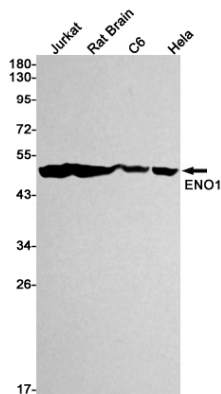
For Research Use Only

IMMUNOLOGICAL SCIENCES

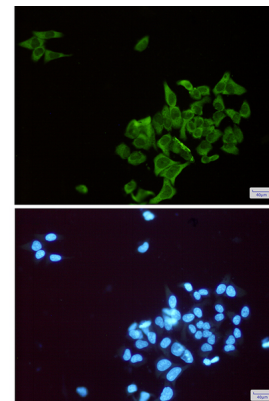
Web-site: <https://immunologicalsciences.com> - E-mail: info@immunologicalsciences.com



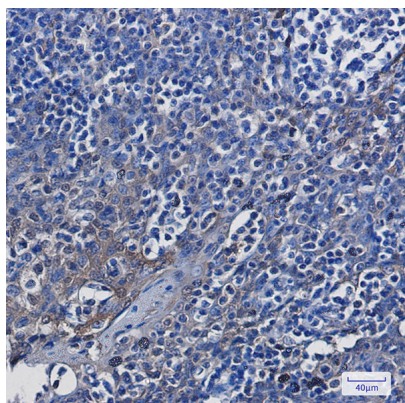
Western blot analysis of ENO1 in mouse brain, mouse heart lysates using ENO1 antibody.



Western blot analysis of ENO1 in Jurkat, rat Brain, C6, HeLa lysates using ENO1 antibody.



Immunocytochemistry analysis of ENO1(green) in HeLa using ENO1 antibody, and DAPI(blue)



Immunohistochemistry analysis of paraffin-embedded Human tonsil using ENO1 antibody. High-pressure and temperature Sodium Citrate pH 6.0 was used for antigen retrieval.

For Research Use Only
IMMUNOLOGICAL SCIENCES